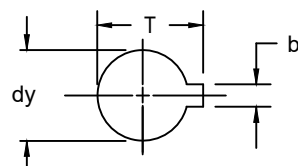


GEARBOX MODEL	FLANGE TYPE	d1	d2 (H8)	d3 ± 0.01	(qty.)d4	h	h1	L MAX.	SQ. KEY			RECT. KEY		
									b	dy max.	T	b	dy max.	T
GS50.3	FA10	4.9	3.346	4.00	(4) 3/8-16	0.157	0.63	2.48	3/8	1 7/16	1.605	3/8 X 1/4	1 1/2	1.543
GS63.3 ⁽⁴⁾	FA10	4.9	3.346	4.00	(4) 3/8-16	0.157	0.63	2.95	1/2	1 7/8	2.096	1/2 X 3/8	2	2.161
GS63.3	FA12	5.9	4.134	4.92	(4) 1/2-13	0.157	0.75	3.07	1/2	1 7/8	2.096	1/2 X 3/8	2	2.161
GS80.3 ⁽⁴⁾	FA12	5.9	4.134	4.92	(4) 1/2-13	0.157	0.75	3.15	5/8	2 3/8	2.477	5/8 X 7/16	2 1/2	2.684
GS80.3	FA14	6.9	4.528	5.51	(4) 5/8-11	0.197	0.98	3.54	5/8	2 3/8	2.477	5/8 X 7/16	2 1/2	2.684
GS100.3 ⁽⁴⁾	FA14	6.9	4.528	5.51	(4) 5/8-11	0.197	0.98	4.92	3/4	3	3.332	3/4 X 1/2	3 1/8	3.334
GS100.3	FA16	8.3	5.512	6.50	(4) 3/4-10	0.197	1.26	4.92	3/4	3	3.332	3/4 X 1/2	3 1/8	3.334
GS125.3 ⁽⁴⁾	FA16	8.3	5.512	6.50	(4) 3/4-10	0.197	1.26	5.04	7/8	3 3/8	3.760	7/8 X 5/8	3 5/8	3.889
GS125.3	FA25	11.8	8.858	10.00	(8) 5/8-11	0.197	0.98	5.04	7/8	3 3/8	3.760	7/8 X 5/8	3 5/8	3.889
GS160.3	FA25	11.8	8.858	10.00	(8) 5/8-11	0.236	1.00	5.24	1	4	4.441	1 X 3/4	4 3/16	4.507
GS125.3 ⁽⁴⁾	FA30	13.8	9.055	11.75	(8) 3/4-10	0.236	1.26	6.57	7/8	3 3/8	3.760	7/8 X 5/8	3 5/8	3.889
GS160.3 ⁽⁴⁾								5.83	1	4	4.441	1 X 3/4	4 3/16	4.507
GS200.3								6.30	1 1/4	5	5.551	1 1/4 X 7/8	5 1/4	5.617
GS160.3 ⁽⁴⁾	FA35	16.3	10.236	14.00	(8) 1-8	0.236	1.57	7.50	1	4	4.441	1 X 3/4	4 3/16	4.507
GS200.3 ⁽⁴⁾								1 1/4	5	5.551	1 1/4 X 7/8	5 1/4	5.617	
GS250.3								9.20	1 1/2	5 3/4	6.405	1 1/2 X 1	6	6.664
GS200.3 ⁽⁴⁾	FA40	18.7	11.811	16.00	(8) 1 1/4-7	0.393	2.00	9.00	1 1/4	5	5.551	1 1/4 X 7/8	5 1/4	5.617
GS250.3 ⁽⁴⁾								9.65	1 1/2	5 3/4	6.405	1 1/2 X 1	6	6.664
GS250.3 ⁽⁴⁾	FA48	22.0	14.566	19.01	(12) 1 1/4-7	0.275	2.00	11.33	1 1/2	5 3/4	6.405	1 1/2 X 1	6	6.664

Notes:

1. All dimensions are in inches.
2. Unless specified tolerance per ISO 2768-m.
3. FA Flange per MSS STANDARD SP-101 unless otherwise noted.
4. Optional FA Mounting Flange.



DIMENSIONS 'b' BASED ON ANSI B17.1 AT MAX. BORE 'dy'

STANDARD FA MOUNTING FLANGE DIMENSIONS

GS50.3 - GS250.3

BY/DATE
MC
03/27/2026

APP/DATE
JP
03/27/2026

DWG. NO.

SK099241

REV
16